



Mission Pledge

PRESBYTERIAN WOMEN'S ANNUAL FUND

And God is able to provide you
with every blessing in abundance,
so that by always having enough
of everything, you may share
abundantly in every good work.

—2 Corinthians 9:8

As you have been generously blessed, please give generously
to support our shared PW ministry.

Cultivating Presbyterian Women

Presbyterian Women in Eastern Oregon Presbytery and Boise Presbytery recently reflected on why they give and why to PW in particular.

- I give from the heart to things I feel truly fill a basic need—to build spirit or meet physical needs.
- It's very simple. I give because God gives, every day and in every way.
- I give to PW because I am proud to be part of Presbyterian Women. The organization supports amazing work in the U.S. and around the world.
- I give to further the work of Jesus in the world.
- It makes me feel good knowing I can give. There were times when I was in need and received help. Today, I can give to others.
- I give because I can. I give because I must. I give because I love.
- God always shows me there's enough to share. God's math always amazes me.
- I give to help women go to the Gathering.
- I give because I can. We are God's hands and feet in the world.
- All life should include service to others, as a way to connect with the human spirit.
- I give to build an inclusive, caring *community* of women. So important!

When PW's churchwide leaders shared why they give to PW, their answers also witnessed to a deep faith in Jesus Christ and commitment to PW's Purpose.

For me, giving to PW is a ministry that returns a small portion of the grace that the Lord Jesus Christ has blessed me with. And it is a way of empowering women and girls by living into the PW Purpose.

—Wanda Beauman, vice moderator for justice and peace concerns

For me, giving to PW is a way to share God's love.

—Ana Camila Vazquez, finance chair

I give to PW because of the blessings that I have received from participating in Presbyterian Women. I believe very strongly in its mission and the PW Purpose.

—Chris Murphy, synod representative

We each have our own reasons for giving, and for giving to Presbyterian Women. As you ask the women in your congregation, presbytery or synod to make their financial commitments to the Mission Pledge for 2019, invite them to consider all that the organization does and helps make possible. And then invite them to write why they choose to give to Presbyterian Women. Share your answers by emailing them to sharon.gillies@pcusa.org or posting on Facebook or Twitter with the hashtag #WhyIGivePW.

Thank you to Magdalena García and Jieun Han for giving their time and talent in translating the moderator's letter (page 1) into Spanish and Korean, respectively.

A Letter from Your 2015–2018 PW Churchwide Moderator



Dear Sisters in Christ,

I was loved into PW. During these three amazing years as your churchwide moderator, I have witnessed this affirming love—a love expressed through presence, community and commitment—a love that transforms, overcomes and empowers. Through loving service, PW brings God's light to the world.

As your moderator, I have been to places I could not have known beforehand but now will never forget. I have walked miles alongside thousands of sisters who share with me this journey of faithful commitment to Presbyterian Women—from my neighborhood church to the beaches of Bali. No matter where I find myself, I know that Presbyterian Women (individuals and the organization) are transforming the world through faithful commitment and expression of the PW Purpose.

As my term draws to a close, I trust that Presbyterian Women will continue to cultivate our ministry with love and care. “And God is able to provide you with every blessing in abundance, so that by always having enough of everything, you may share abundantly in every good work” (2 Cor. 9:8). Let us trust in God's abundance as we live in hope and grace. Join me in the opportunity to love others into PW with our gifts of service and financial support.

저는 장로교 여성 Presbyterian Women을 통해 사랑을 받았습니다. 전체교회의 의장으로 지낸 놀라운 3년 동안 저는 이 긍정의 사랑, 즉 함께 함과 공동체와 헌신을 통해 표현된 사랑, 곧 변화와 극복과 힘을 주는 사랑을 목격했습니다. 이러한 사랑의 봉사를 통해 PW는 하나님의 빛을 세상에 가져옵니다.

여러분의 의장으로서, 저는 이전엔 알지 못했지만 이제는 결코 잊지 못할 여러 지역을 방문했습니다. 이웃 동네 교회에서부터 인도네시아 발리의 해변에 이르기까지, 장로교 여성 PW에 대한 신실한 헌신의 여행에 동행한 수천 명의 자매들과 함께 수 마일을 걸어 왔습니다. 내가 어디에 있는지에 관계 없이, 장로교 여성들 (개인과 조직으로서)이 PW의 목적을 충실히 이행하고 표현함으로써 세상을 변혁시키고 있음을 깨닫습니다.

제 임기가 끝나감에 따라, 장로교 여성들은 사랑과 보살핌으로 우리의 사역을 계속 키워나갈 것이라고 저는 확신합니다. “하나님이 능히 모든 은혜를 너희에게 넘치게 하시나니 이는 너희로 모든 일에 항상 모든 것이 넉넉하여 모든 착한 일을 넘치게 하게 하려 하심이라” (고린도후서 9:8). 소망과 은혜 속에 살면서 하나님의 풍성하심을 신뢰합니다. 우리와 함께 봉사와 재정적 지원의 은사로 PW를 통해 다른 사람들을 사랑할 수 있는 기회에 합류하시길 바랍니다.

Me enamoré de PW. Durante estos tres increíbles años de servicio como su moderadora de toda la iglesia, he sido testigo de este amor afirmador—un amor que se expresa por medio de la presencia, la comunidad y el compromiso—un amor que transforma, vence y empodera. Por medio del servicio amoroso, PW lleva la luz de Dios al mundo.

Como su moderadora, he visitado lugares que nunca antes había conocido pero que ahora jamás olvidaré. He caminado millas junto a miles de hermanas que comparten conmigo este peregrinaje de un compromiso fiel con Mujeres Presbiterianas—desde la iglesia de mi vecindario hasta las playas de Bali. No importa donde me encuentre, yo sé que Mujeres Presbiterianas (individualmente y como organización) están transformando el mundo por medio de su fiel compromiso con el Propósito de PW y la manifestación del mismo.

A medida que mi término llega a su fin, confío en que Mujeres Presbiterianas continuarán cultivando nuestro ministerio de amor y cuidado. “Y Dios es poderoso como para que abunde en ustedes toda gracia, para que siempre y en toda circunstancia tengan todo lo necesario, y abunde en ustedes toda buena obra” (2 Cor. 9:8, RVA). Confíemos en la abundancia de Dios a medida que vivimos con esperanza y gracia. Acompañenme en esta oportunidad para intentar que otras personas se enamoren de PW por medio de nuestros donativos de servicio y apoyo financiero.

Carol Winkler



“And God is able to provide you . . .

What Does the Mission Pledge Do?

The Mission Pledge, PW’s annual fund, supports every mission and ministry of PW—no exceptions. Here is what was made possible during the 2015–2018 triennium because of your generosity:

- PW groups at all levels—congregation, presbytery, synod and churchwide—through programming, publishing and related staff support
- Participation in events that develop and enhance PW leadership, including presbytery and synod events
- Continued mission partnerships with our sisters living in regions previously visited by the USA Mission Experience and Global Exchange, and nurture of new partnerships brought about by these programs in San Francisco’s Bay Area and Indonesia
- Involvement in mission projects, like Knitting4Peace, which directs the prayers and handmade items of people who are knitting, crocheting, weaving or quilting to areas of the world in need of prayers, and where the dolls, hats, blankets and many other items will brighten lives
- Peace and justice initiatives and advocacy efforts, such as promoting children’s literacy in connection with the PC(USA)’s Educate a Child initiative
- Solidarity through ecumenical movements, including World Day of Prayer, Fellowship of the Least Coin and Church Women United
- Presence at General Assembly, Big Tent and other churchwide events
- Regular meetings of an intentionally diverse and representative board of directors (the Churchwide Coordinating Team). This group—with representatives from each synod and the major racial ethnic groups in the church, as well as new immigrant women and young women—collectively discerns the goals and work of the organization.
- The award-winning publishing ministry of PW, including partial support for *Horizons* magazine (both print and digital formats), the PW/*Horizons* Bible study and other materials
- Continued management of PW, an effective national nonprofit with worldwide mission and ministry reach. Your gifts also provide for necessary common operating expenses such as rent, utilities, insurance, staffing and office supplies.
- PW support of PC(USA) mission and partnerships



Global Exchange



Knitting4Peace



Fellowship of the Least Coin



USA Mission Experience

Want to learn more?

Visit Presbyterian Women’s website, www.presbyterianwomen.org and find PW on Facebook (Presbyterian Women in the PC(USA)) and Twitter (@PWPCUSA).



... with every blessing in abundance ...

Where Do Our Mission Pledge Dollars Go?

This is the most common question about the Mission Pledge. And the answer is, as PW's annual fund, the Mission Pledge supports every PW mission and ministry.

At every level of the organization, the Mission Pledge brings to life the commitments made in the PW Purpose:

- Forgiven and freed by God in Jesus Christ, and empowered by the Holy Spirit, we commit ourselves
- to nurture our faith through prayer and Bible study,
 - to support the mission of the church worldwide,
 - to work for justice and peace, and
 - to build an inclusive, caring community of women that strengthens the Presbyterian Church (U.S.A.) and witnesses to the promise of God's kingdom.

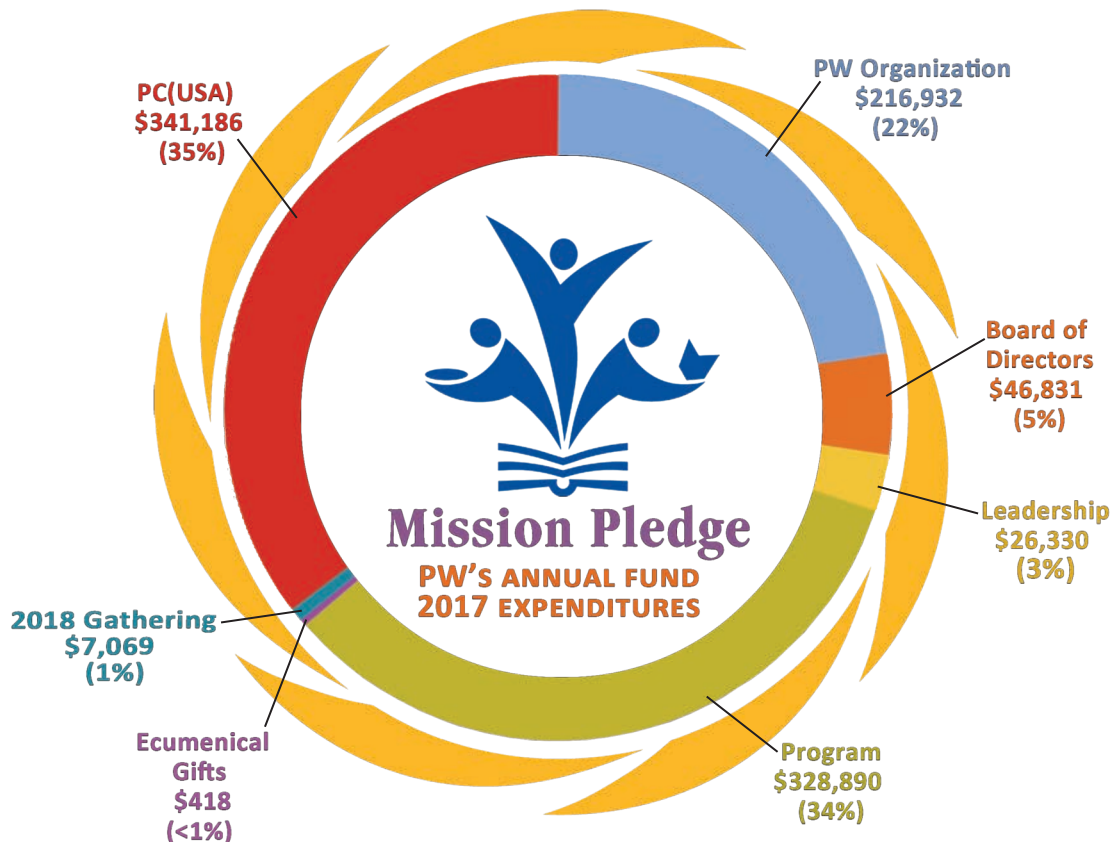
Mission Pledge gifts help fund the creation and nurturing of mission partnerships; justice and peace advocacy and other actions; engagement in ecumenical movements; new directions in leadership enhancement and training; the production of Bible studies to nurture your faith, and magazines to broaden your awareness; support of your PC(USA) denomination; and much more. Your Mission Pledge gift also supports common operating expenses for PW—from rent and staff to insurance and PW's board of directors (the Churchwide Coordinating Team).

Giving to the Mission Pledge means carrying PW's witness and care around the world.

Mission Pledge Annual Fund Revenue*

2014	\$1,475,895
2015	\$1,197,465
2016	\$1,013,151
2017	\$967,656

*By calendar year



... so that by always having enough of everything ...

About This Packet and the Mission Pledge

In Celebration envelopes now available

During times of celebration and the celebration of life, make available *In Celebration* envelopes. These envelopes provide an easy way for loved ones to direct their gifts to PW in honor or memory of a beloved Presbyterian woman. PWR17202, free.



To order, go to www.presbyterianwomen.org/shop or call 800/533-4371.

What's included in this packet?

There are several pieces enclosed to help you promote and receive gifts toward the Mission Pledge, PW's annual fund:

- ✓ Introductory letter from Carol Winkler, PW's 2015–2018 churchwide moderator
- ✓ Mission Pledge interpretive materials
- ✓ Mission Pledge forms for PW in the Congregation and PW in the Presbytery
- ✓ Mission Pledge card template

Please use this packet and enclosed materials in the fall of 2018 for financial commitments to the 2019 PW Mission Pledge. Feel free to photocopy any of the materials, or download them from www.presbyterianwomen.org/missionpledge.

Who receives Mission Pledge packets?

Every PC(USA) congregation receives a 2019 Mission Pledge packet (addressed to "PW/Women's Group"), as do members of PW's board of directors (the Churchwide Coordinating Team), Celebration Giving representatives, and moderators, co-moderators and treasurers of Presbyterian Women in the Synod and Presbytery.

To order a packet (for your group or for someone who should have received a packet and did not), go to www.presbyterianwomen.org/shop or call 800/533-4371; request item PWR18011. Or download the packet from www.presbyterianwomen.org/missionpledge. Please also contact Patricia Longfellow, patricia.longfellow@pcusa.org or 844/797-2872, ext. 8015, to ensure that the PW database contains that person's contact information.

Who should promote giving to the PW Mission Pledge?

Everyone should promote giving to PW! With that said, in many cases a designated leader organizes and promotes PW giving. PW in the Congregations (PWC) use a variety of campaign models—in some, the PWC moderator is responsible for the Mission Pledge; in others, the PWC treasurer or a circle member takes the lead role. Some congregations also have a Celebration Giving representative (CGR) who promotes the Mission Pledge and all parts of the PW Celebration Giving program. PW encourages groups, congregations, presbyteries and synods to use the model that works for them.

Leaders in PW in the Presbytery and Synod (PWP and PWS), please work within your coordinating teams (CTs) to help PWC and PWP leaders and contacts complete the appropriate pledge form (see pages 7–8). And if you know of Presbyterian Women who do not currently have a circle, please encourage them to give as individuals and to remain active in the PW in the Presbytery and Synod groups.

Why should I encourage giving to the PW Mission Pledge?

The simple answer: because nearly every mission and ministry program of PW is supported (in full or in part) through gifts to the Mission Pledge, PW's annual fund. Leadership enhancement and training, mission partnerships, publishing efforts, justice and peace advocacy and much more are all possible because of the Mission Pledge. Mission Pledge gifts also support your denomination, PC(USA) world mission, and PW's common operating expenses, such as rent, utilities and information technology support. You can find more detailed examples and statistics on how your Mission Pledge dollars are put to work on pages 2 and 3 of this packet.

This packet includes material for PW at the congregation, presbytery and synod levels. Individuals who are so moved can give to PW at any time, within and outside the circle, by giving online, mailing a check, and planning an estate gift or bequest. For more information, visit www.presbyterianwomen.org/missionpledge, or contact Rhonda Martin, rhonda.martin@pcusa.org, or 844/797-2872, ext. 5596.

...you may share abundantly...



Encouraging Support of the Mission Pledge

Commitments to Presbyterian Women's Mission Pledge, PW's annual fund, traditionally are made through PW in the Congregation during a fall PW circle meeting, gathering or event, and/or a fall worship service; pledges are honored and gifts are received throughout the following year. For this campaign, pledges are made in 2018 and gifts are received in 2019.

Leaders' roles

All PW leaders have important roles in promoting giving to the Mission Pledge, PW's annual fund. Not all groups have the same leadership positions or giving patterns. Carry out the Mission Pledge campaign in a way that works for your congregation, presbytery and synod.

CAMPAIGN TIMELINE AND CHECKLISTS

Early fall 2018

PW in the Synod (PWS) moderator

- ✓ Offer support to PW leaders responsible for pledges/gifts.

PW in the Presbytery (PWP) moderator

- ✓ Write a personal letter (to share with each congregation in the presbytery) that includes
 - a story about what the Mission Pledge means to you and to PW in the Congregations in your presbytery (see pages 2–3 for examples and statistics) and
 - an invitation to prayerfully consider personal pledges/gifts to the Mission Pledge.
- ✓ Offer support to PW leaders responsible for pledges/gifts.

Fall 2018

PW in the Congregation (PWC) or circle leader

- ✓ Receive or request
 - a Mission Pledge packet
 - a pledge card template (see inside back cover)
 - the pledge form for PW in the Congregation (page 7)
- These three items also are available at www.presbyterianwomen.org/missionpledge.

- PWP moderator cover letter
- ✓ Choose and share your PW Mission Pledge impact story, noting that the Mission Pledge supports every PW mission and ministry program (including common operations) and the PC(USA).
 - See pages 2–3 for statistics and examples.
- ✓ At a preselected worship service, congregation or PW event,
 - give each person an envelope with a pledge card inside (#10 envelopes work well);
 - ask each person to write her/his name on the outside of the envelope, prayerfully decide how much to give to the PW Mission Pledge in 2019, write the pledge amount on the card and return it in the envelope provided; and
 - receive all completed pledge cards.
- ✓ Add pledge amounts and report the total on the Mission Pledge form for PW in the Congregation (page 7).
- ✓ Send the completed form to the Presbyterian Women in the Presbytery (PWP) moderator or Celebration Giving representative by November 15, 2018.

Celebration Giving representatives or PW in the Presbytery leaders

- ✓ Ensure that all PW in the Congregation groups have made pledges.
- ✓ Record the pledge total on the form for PW in the Presbytery (see page 8) and attach a list of the PWCs that are pledging.
- ✓ Keep the original and send copies by December 3, 2018, to the
 - treasurer of PW in the Presbytery,
 - moderator of PW in the Synod, and
 - PW Business Office, 100 Witherspoon St., Louisville, KY 40202-1396.
- ✓ Write a personal thank-you letter to each PW in the Congregation that pledges support for the 2019 PW Mission Pledge.

The Mission Pledge makes possible amazing things at the local level—mission, ministry, advocacy, community-building and leadership development to name a few! Won't you share your stories about what the annual fund seeds in your congregation or presbytery? Email your story to sharon.gillies@pcusa.org so it can be shared more widely.



... in every good work.”

Receiving the Mission Pledge

2019

PWC member(s) responsible for pledges/gifts

- ✓ Distribute envelopes once a month, or according to the congregation's giving pattern, at circle meetings or selected events, or give each person 12 envelopes in January for use throughout 2019.
 - ✦ Consider ordering more of the small envelopes for group giving (see image, top right).
- ✓ Ask circle/congregation members to give toward their pledge amount for the year.
- ✓ Record the amount given each month on each person's pledge card.
- ✓ Give the money received at each meeting, worship service or event to the PWC treasurer or person responsible for pledges/gifts.
- ✓ Send quarterly gifts from the congregation* with all other quarterly gifts to the PWP treasurer by March 10, June 10, September 10 and December 10, 2019.
 - ✦ Remittance forms are available at www.presbyterianwomen.org/missionpledge.
 - ✦ Treasurers also receive these forms from Rhonda Martin, PW Business Office, 844/797-2872, ext. 5596, or rhonda.martin@pcusa.org.

Resources

MISSION PLEDGE CARDS

Mission Pledge cards are an easy way for PW in the Congregations to make and keep track of pledges. Instructions for receiving the Mission Pledge using pledge cards are on page 5 (under “Fall 2018, PWC or circle leader”), and the pledge card template is on the inside back cover or www.presbyterianwomen.org/missionpledge.

MISSION PLEDGE GIVING ENVELOPES

PW in the Congregation groups may find it helpful to use preprinted envelopes to receive Mission Pledge gifts. For your convenience, we've provided an image of two different envelopes: the smaller one can be used to receive gifts within a PW group, the larger envelope can be used for individual gifts made outside of a group, over and above circle gifts, or by credit card.

Envelope for giving through the PW in the Congregation



Circle and/or congregation members can use the small, group giving envelope to honor gifts toward their group's pledge. See this page (under “2019, PWC member(s) responsible for pledges/gifts”) for instructions on using group giving envelopes. Group giving envelopes can be ordered online (www.presbyterianwomen.org/shop) or by telephone (800/533-4371); ask for item PWR10103; \$1/pack of 50, plus shipping.

Envelope for giving outside the PW group



The large individual giving envelope is ideal for individuals who

- ✦ do not participate in a PW circle,
- ✦ attend a church without an active PW group,
- ✦ would like a tax receipt for their gift,
- ✦ want to give via credit card, or
- ✦ wish to make an additional gift over and above their group pledge.

Please make these individual giving envelopes available at congregation, presbytery and synod meetings and gatherings, as well as at special events as appropriate. The envelopes can also be found in the PW/*Horizons* Bible study and in each issue of *Horizons* magazine. Individual giving envelopes (available in packs of 10) can be ordered online (www.presbyterianwomen.org/shop) or by telephone (800/533-4371); ask for item PWR16456; free.

Gifts made by credit card can be made online at www.presbyterianwomen.org/missionpledge. Individuals can give to the Mission Pledge at any time by sending a check made payable to Presbyterian Women, with “Mission Pledge” and the name of their presbytery in the memo line, to

Presbyterian Women Remittance Processing
PO Box 643652
Pittsburgh, PA 15264-3652

Please note that presbyteries and synods will be credited for all individual gifts.

***Tax receipts are available for PWC or PWP group gifts only. Individuals who would like tax receipts for their gifts should follow the instructions on this page under “Giving outside the PW group.” Contact Patricia Longfellow, 844/797-2872, ext. 8015, or patricia.longfellow@pcusa.org, for more information.**

Presbyterian Women's Mission Pledge (PW's Annual Fund)



PW in the Congregation Pledge Form

January 1, 2019—December 31, 2019

As Presbyterian Women, we make the following pledge to support the mission of Presbyterian Women in the Presbytery, Presbyterian Women in the Synod and Presbyterian Women at the churchwide level, as well as the mission of the Presbyterian Church (U.S.A.).

Amount of Mission Pledge, PW's Annual Fund

Please indicate below the amount pledged to PW at each level.

- ♦ To support the mission of Presbyterian Women churchwide _____
- ♦ To support the mission of Presbyterian Women in the Synod _____
- ♦ To support the mission of Presbyterian Women in the Presbytery _____

Total Mission Pledge from PW in the Congregation _____

Name of Congregation _____

Signature of the moderator of Presbyterian Women in the Congregation

Address

City State Zip

Phone Email

Deadlines

This Mission Pledge form should be completed and sent to the moderator of Presbyterian Women in the Presbytery (or whoever is responsible for the Mission Pledge) no later than **November 15, 2018**. Send all quarterly payments of this pledge to the **treasurer of Presbyterian Women in the Presbytery** by **March 10, June 10, September 10, and December 10, 2019**.

Instructions

1. Enter the pledge amount for support of Presbyterian Women at the churchwide level (including support for the mission of the church worldwide).
2. Enter the amount of support for Presbyterian Women at each level, as requested by your PW in the Presbytery and PW in the Synod.
3. Keep a copy of this form for your records and send the original to the person indicated below.

Moderator of Presbyterian Women in the Presbytery or designee

Address

City State Zip

Phone Email

Presbyterian Women's Mission Pledge (PW's Annual Fund)



PW in the Presbytery Pledge Form

January 1, 2019—December 31, 2019

As Presbyterian Women, we make the following pledge to support the mission of Presbyterian Women in the Presbytery, Presbyterian Women in the Synod and Presbyterian Women at the churchwide level, as well as the mission of the Presbyterian Church (U.S.A.). Presbyterian Women in the Presbytery is responsible for reporting the total amount pledged in congregations.

Name of Presbytery _____

Amount of Mission Pledge, PW's Annual Fund

Please indicate below the amount pledged to PW at each level.

- + To support the mission of Presbyterian Women churchwide _____
 - + To support the mission of Presbyterian Women in the Synod _____
 - + To support the mission of Presbyterian Women in the Presbytery _____
- Total Mission Pledge from PW in the Congregations** _____

Signature of the moderator of Presbyterian Women in the Presbytery (or whoever is responsible for PW giving in the Presbytery)

Address

City

State

Zip

Phone

Email

Deadlines

- + Keep one copy of this form for your files.
- + Mail this Mission Pledge form no later than **December 3, 2018** to each of the following:
 1. Treasurer of PW in the Presbytery
 2. Moderator of PW in the Synod
 3. PW Business Office, 100 Witherspoon St.,
Louisville, KY 40202-1396

Quarterly Churchwide Payments

Send quarterly payments of this pledge to

Presbyterian Women Remittance Processing
PO Box 643652
Pittsburgh, PA 15264-3652

Quarterly churchwide payments should be mailed by **March 15, June 15, September 15, and December 15, 2019** with remittance forms supplied to treasurers of PW in the Presbytery. These forms can also be downloaded at www.presbyterianwomen.org/missionpledge.

The 2019 Mission Pledge, Presbyterian Women's Annual Fund

Name _____ Amount pledged _____

January	\$ _____	July	\$ _____
February	\$ _____	August	\$ _____
March	\$ _____	September	\$ _____
April	\$ _____	October	\$ _____
May	\$ _____	November	\$ _____
June	\$ _____	December	\$ _____

Every blessing in abundance . . .

We ask that you prayerfully
consider your gift to the 2019
Mission Pledge, PW's annual fund.

Total amount paid _____ Treasurer's signature _____

The 2019 Mission Pledge, Presbyterian Women's Annual Fund

Name _____ Amount pledged _____

January	\$ _____	July	\$ _____
February	\$ _____	August	\$ _____
March	\$ _____	September	\$ _____
April	\$ _____	October	\$ _____
May	\$ _____	November	\$ _____
June	\$ _____	December	\$ _____

Every blessing in abundance . . .

We ask that you prayerfully
consider your gift to the 2019
Mission Pledge, PW's annual fund.

Total amount paid _____ Treasurer's signature _____

The 2019 Mission Pledge, Presbyterian Women's Annual Fund

Name _____ Amount pledged _____

January	\$ _____	July	\$ _____
February	\$ _____	August	\$ _____
March	\$ _____	September	\$ _____
April	\$ _____	October	\$ _____
May	\$ _____	November	\$ _____
June	\$ _____	December	\$ _____

Every blessing in abundance . . .

We ask that you prayerfully
consider your gift to the 2019
Mission Pledge, PW's annual fund.

Total amount paid _____ Treasurer's signature _____



Presbyterian Women
in the Presbyterian Church (U.S.A.), Inc.
100 Witherspoon St.
Louisville, KY 40202-1396

Nonprofit
Organization
U.S. Postage
PAID
Louisville, KY
Permit No. 1215

2019 Mission Pledge of Presbyterian Women

PW'S ANNUAL FUND

**Materials for Presbyterian Women
in the Congregation, Presbytery and Synod**

Please circulate widely.

PWR18011

Visit www.presbyterianwomen.org/missionpledge for an electronic copy of this packet or for stories and blog posts about how gifts to the Mission Pledge, PW's annual fund, improve lives and strengthen communities the world over.

