



Tending Our Garden for the "Good of All"

Presbyterian Women 2019: Year in Review

"So let us not grow weary in doing what is right, for we will reap at harvest time [W]henver we have an opportunity, let us work for the good of all"

—Galatians 6:9–10

In 2019, Presbyterian Women sowed seeds of . . .

Community

- In 2019, PW gave \$82,509 in "least" coins to the International Fellowship of the Least Coin! The ICFLC awarded 23 grants in 2019 (\$90,100) in Africa, Asia, Europe, Latin America, Middle East and North America.
- July 31 was established as PW Gives Day! In 2019, \$9,280 was donated to celebrate and support all that PW makes possible.
- Twelve of sixteen PW synods held gatherings (Pacific; Alaska-Northwest; Mid-Atlantic; Living Waters; Lakes and Prairies; Covenant; Southern California and Hawaii; Sun; Rocky Mountains; Southwest; Northeast; South Atlantic); also in 2019, Encuentro (Hispanic Latin PW); National Asian PW; and National Korean PW; and Native American Women's Gathering.
- More than 800 individuals were recognized with Honorary Life Memberships!
- Facebook, Twitter and Instagram virtually brought together more than 10,000 PW. Let's grow our reach in 2020!

Faith

- The 2019–2020 PW/*Horizons* Bible study, *Love Carved in Stone: A Fresh Look at the Ten Commandments*, by Eugenia A. Gamble, was a PW bestseller! Faithful sisters at Tokyo Union Church in Japan are currently participating in this study.

Mission

- Through our Birthday and Thank Offerings, Presbyterian Women awarded nearly \$1 million in grants (\$776,812) for mission and ministry (seven international recipients, twenty-two domestic).
- Together in Service for Puerto Rico flourished, supporting Puerto Rico's recovery work financially and with pillowcases for children. Presbyterian Women gave more than \$17,000 to rebuilding efforts and more than 2,000 pillowcases!
- Nineteen women representing thirteen synods participated in the USA Mission Experience to the Finger

Lakes Region of New York to explore the theme, "Standing on the Shoulders of Empowered Women." Participants visited 22 churches (in 11 days!) as they explored the rich history of "empowered women" who championed voting rights for women and the abolition of slavery.

Advocacy and Equity

- The Presbyterian delegation to the UN Commission on the Status of Women included more than 28 women. More than 8,000 from around the world attend this event. For the first time in many years of participation, PW sent its delegation under PW's newly achieved special consultative status at the U.N., an eight-year process!
- PW Churchwide's Racial Equity Committee studied *Anxious to Talk About It: Helping White Christians Talk Faithfully About Racism* (St. Louis: Chalice, 2017) by Carol B. Helsel.
- Substance use disorder and eco-justice became foci for justice and peace work; PW groups at all levels of the church started addressing these through action and awareness-raising.

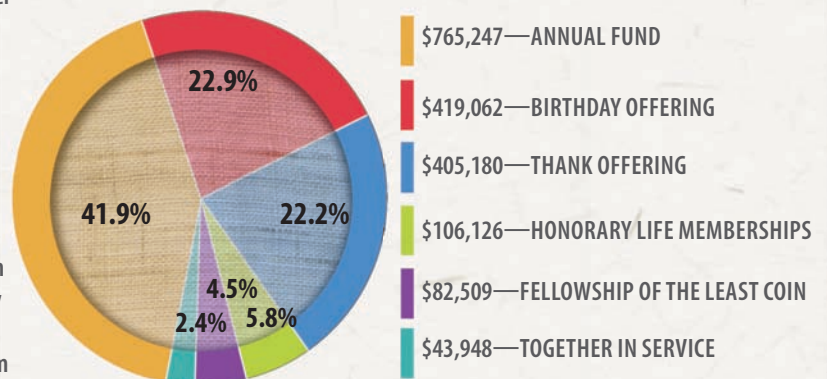
Possibility!

- Synods received grants from PW Churchwide to help presbyteries connect in new virtual ways! These seeds were planted in 2019 and have become strong vines of communication in 2020.
- Anna and Jerry Bedford generously gave two endowments to support PW ministries into the future: The Anna H. Bedford Endowment for Presbyterian Women, in support of the Bible study and related resources, and the Susan Jackson Dowd Endowment for Presbyterian Women in the PC(USA), which supports and nurtures connections among women of faith worldwide.
- Planning for the 2021 Churchwide Gathering of Presbyterian Women began and continues! See you in St. Louis, August 5–8, 2021.

This report is a snapshot of what Presbyterian Women made possible "for the good of all" in 2019. Your monetary support and participation in PW at any level (whether as a circle member, Bible study field tester, Birthday Offering supporter, *Horizons* magazine reader or PW leader) is a blessing that, through the workings of the Holy Spirit, transforms and empowers both giver and recipient. The PW "garden" is vast—from circles to Churchwide—but is intimately connected and connectional. Together, we serve.

Presbyterian Women supports mission through several giving streams. The largest—PW's annual fund (the Mission Pledge)—makes PW possible at all levels of the organization and ensures that the other streams have shape and depth consistent with PW's Purpose. This graph provides a glimpse of funds received by PW Churchwide as mission giving. These gifts, along with other sources of revenue, make possible PW's grants, leadership development, resource and program development, and support of the mission of the church worldwide.

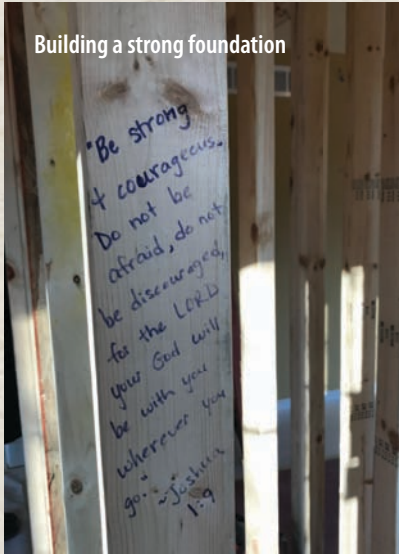
2019 MISSION SUPPORT TOTAL : \$1,822,072



A Case for Support: Wings of Refuge

“So let us not grow weary in doing what is right, for we will reap at harvest time . . . [W]henver we have an opportunity, let us work for the good of all . . .”

—Galatians 6:9–10



Building a strong foundation

Wings of Refuge, a Christ-centered ministry in Iowa, was established in 2013 to help victims of commercial sex trafficking reestablish lives free of exploitation and harm. Four powerful words guide Wings of Refuge’s ministry: Reach, recover, rebuild, rise. In 2019, Presbyterian Women, through our historic and life-giving Birthday Offering, granted \$120,000 to Wings of Refuge for their Restoration Home. This home provides refuge for women who need a safe place to recover, rebuild and rise.

“The purchase of this house has provided a sense of longevity to our organization that our previous rental couldn’t. Knowing that Wings of Refuge has a permanent house for up to five precious, worthy survivors, somehow adds the dimension of security, home and community that is life giving.”—Bev, Wings of Refuge executive director

“Having a sensory room in our home has been such a blessing! We now have a space for participants to ground themselves and relax their minds. They are able to use different sensory items to reduce anxiety and reinforce healthy coping skills. Having a beautiful art room full of new supplies has provided such a creative outlet for our participants. They have space to express themselves in numerous ways, which proves to be a beneficial therapeutic outlet. Many projects have already been assembled in that room! The newly remodeled kitchen has provided multiple opportunities for bonding over preparing meals together. We have been able to try new recipes, participants have discovered new cooking/baking skills, and they have gained a newfound sense of pride in their creations. We have also been able to have many family meals and games around our kitchen table. We strive to promote a sense of family at Wings of Refuge; many times, those moments happen in the kitchen.”—Brandi, direct care coach

“We now have more space to learn and grow. The home provides comfortable living space for study groups and developing independent skills. The location is close to walking paths, churches, the library and community activities! The art and sensory room provide outlets for our feelings.”—Participant

“The new location makes our home more secure and anonymous. It allows us space to be alone when needed and gives Wings of Refuge the opportunity to help more women with more and bigger bedrooms and bathrooms. Our in-home exercise room means I can now relieve stress 24/7 in a great space; and I love the secure, fenced-in yard!”—Participant

“As a wellness coordinator, I am so happy to have our own exercise room in this bigger home. This means the women can work out in the comfort of a place that is safe and familiar. It allows us more flexibility on tough days.”—Kelly, direct care staff



Under construction



New sensory room

No matter how you choose to give to Presbyterian Women, your support of PW’s annual fund sustains PW’s work “for the good of all” (Gal. 6:10b), locally, nationally and globally.

Give

• In your circle

• On line

Give securely at
www.presbyterianwomen.org/give.

• By mail

Presbyterian Women, Inc.
PO Box 643652
Pittsburgh, PA 15264–3652

- Gifts of stock, third-party gifts, and employment-match donations are also accepted.

Questions?

Contact Rhonda Martin,
502/569-5506, or email
rhonda.martin@pcusa.org



PRESBYTERIAN
WOMEN