

2022 Presbyterian Women Birthday Offering Recipients



Mission at the Eastward (MATE) McCleary House Transitional Housing

missionattheeastward.org

Farmington, Maine

\$80,000

The Birthday Offering grant will help renovate McCleary House for people experiencing homelessness. Poverty has been increasing in Maine, with a growing number of vulnerable people losing their homes due to job loss, eviction, sickness or economic hardship—all complicated in the last years by the pandemic. This transitional home will provide a warm and healthy place to live for 3-4 families or 6-8 individuals over the course of the year, as most guests stay just a few months. The renovated home will provide a safe space for individuals to begin the psycho-social, educational and vocational work needed to move forward with their lives.

Iglesia Presbiteriana de Lares, Puerto Rico Jesus Feeds the Five Thousand

facebook.com/iglesia.lares

Lares, Puerto Rico

\$105,000

Following Hurricane Maria in 2017 and the January 2020 earthquakes in Puerto Rico, the Presbyterian Church in Lares has become the go-to location in the community for food, purified water and personal items. With much of the population elderly and infirmed, they rely on the church for help with necessities. Because the church's kitchen is small, dated and not code compliant, upgrades are needed to continue providing this ministry. With funding from the Birthday Offering, all appliances, wiring, lighting and plumbing will be replaced and the facility will be made ADA accessible. Solar panels and a heavy-duty generator will be installed to provide uninterrupted electrical service and water availability.

2022 Presbyterian Women Birthday Offering Recipients



Mission at the Eastward (MATE) McCleary House Transitional Housing

missionattheeastward.org

Farmington, Maine

\$80,000

The Birthday Offering grant will help renovate McCleary House for people experiencing homelessness. Poverty has been increasing in Maine, with a growing number of vulnerable people losing their homes due to job loss, eviction, sickness or economic hardship—all complicated in the last years by the pandemic. This transitional home will provide a warm and healthy place to live for 3-4 families or 6-8 individuals over the course of the year, as most guests stay just a few months. The renovated home will provide a safe space for individuals to begin the psycho-social, educational and vocational work needed to move forward with their lives.

Iglesia Presbiteriana de Lares, Puerto Rico Jesus Feeds the Five Thousand

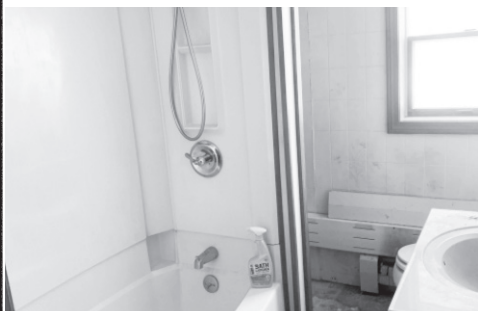
facebook.com/iglesia.lares

Lares, Puerto Rico

\$105,000

Following Hurricane Maria in 2017 and the January 2020 earthquakes in Puerto Rico, the Presbyterian Church in Lares has become the go-to location in the community for food, purified water and personal items. With much of the population elderly and infirmed, they rely on the church for help with necessities. Because the church's kitchen is small, dated and not code compliant, upgrades are needed to continue providing this ministry. With funding from the Birthday Offering, all appliances, wiring, lighting and plumbing will be replaced and the facility will be made ADA accessible. Solar panels and a heavy-duty generator will be installed to provide uninterrupted electrical service and water availability.

McCleary House Transitional Housing at Mission at the Eastward (MATE)
Farmington, Maine • \$80,000



Mission at the Eastward (MATE) has been helping underserved people with housing needs for 60 years. Now they are thrilled to offer a new, innovative approach to transitional housing in Central Western Maine with the McCleary House. This collaborative outreach project of Mission at the Eastward and their next-door neighbor, Fairbanks Union Church (a PCUSA congregation), will provide a welcoming place to stay while people without homes get back on their feet. MATE will use funding from the Birthday Offering to renovate the house and provide for its future maintenance while volunteers from the church will welcome McCleary's guests and offer hospitality throughout their stay.



When no guests are in residence at McCleary, the house will open to volunteer mission teams who travel to Farmington during the summer months to assist with home repair work.



Through the 2022 Birthday Offering, Presbyterian Women will provide hope to housing insecure people in Maine and help to the cooperative efforts of MATE and Fairbanks Union Church. Working together, they will experience the joy of renovating and outfitting McCleary House so they may extend a hand to their neighbors in need of a home.

Learn more and donate to the Birthday Offering of Presbyterian Women
www.presbyterianwomen.org/birthday.

PWR22450

McCleary House Transitional Housing at Mission at the Eastward (MATE)
Farmington, Maine • \$80,000



Mission at the Eastward (MATE) has been helping underserved people with housing needs for 60 years. Now they are thrilled to offer a new, innovative approach to transitional housing in Central Western Maine with the McCleary House. This collaborative outreach project of Mission at the Eastward and their next-door neighbor, Fairbanks Union Church (a PCUSA congregation), will provide a welcoming place to stay while people without homes get back on their feet. MATE will use funding from the Birthday Offering to renovate the house and provide for its future maintenance while volunteers from the church will welcome McCleary's guests and offer hospitality throughout their stay.



When no guests are in residence at McCleary, the house will open to volunteer mission teams who travel to Farmington during the summer months to assist with home repair work.



Through the 2022 Birthday Offering, Presbyterian Women will provide hope to housing insecure people in Maine and help to the cooperative efforts of MATE and Fairbanks Union Church. Working together, they will experience the joy of renovating and outfitting McCleary House so they may extend a hand to their neighbors in need of a home.

Learn more and donate to the Birthday Offering of Presbyterian Women
www.presbyterianwomen.org/birthday.

PWR22450