



PW Newsbytes

News you can use from Presbyterian Women

HOW CAN YOU USE THIS NEWS?

Any way you want!

Forward this entire newsletter, copy and paste sections into your newsletter, or forward the following fliers to share what's new with PW!

- 2026–2027 PW/Horizons Bible Study flier (English edition) 5
- 2026 Horizons BOGO subscription flier 7
- 2025 Year End Appeal flier 8

DECEMBER 2025 EDITION

Board Summary, September 2025

by Susan Jackson Dowd



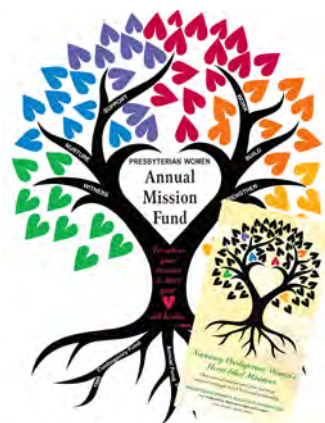
The PW, Inc., Board of Directors met at the Presbyterian Center in Louisville September 17–19, 2025. The meeting began Wednesday morning with worship led by Lincoln Trails synod representative Beth Snyder. Orientations to Board work and national program, along with ethics training, were provided. Reverend Jihyun Oh, Stated Clerk of the General Assembly of the Presbyterian Church (U.S.A.) and executive director of the Interim Unified Agency, brought greetings from the national church. National moderator, Pam Snyder, and vice moderator, Kelsey Law, led the Board in Boundaries Training, a requirement for PC(USA) agency and entity boards.

The Board considered several items of business. Highlights are below.

- On recommendation of the Audit Committee, the Board received the independently reviewed Presbyterian Women in the Presbyterian Church (U.S.A.), Inc., financial statements for the 12 months ending December 31, 2024, and 2023. Susan Brooks, Finance Committee chair, presented the treasurer's report.

Continued on page 3

Promote PW's Annual Mission Fund



The 2026 Annual Mission Fund promotional resource, mailed to PW leaders in the fall, is available to order (item PWR25011; free) or download. This brochure prominently features the tree of life, with roots deeply planted, communicating PW's story of ministry of generosity through the years. Answering the question, "What is Presbyterian Women's Annual Mission Fund and why does it matter?," this resource is for sharing, discussing, displaying and encouraging gifts to the fund that funds PW generosity!

Order all PWR or HZN items from presbyterianwomen.org/shop, or call 800/533-4371, Monday through Friday, 10 am to 5 pm ET.

New Horizons Publishing Schedule



Beginning in 2026, *Horizons* magazine will be published four times a year. While that's a change, the content of the magazines will continue to celebrate and embody the PW Purpose, highlighting ways PW individuals and groups build inclusive communities, do mission and advocacy, grow together in faith and keep PW vital through their creativity, generosity and discipleship. Based on when particular resources are needed, the new schedule reflects PW and church life seasons.



Spring (delivering first week of March)

- Birthday Offering
- previous year's index
- Installation Service
- Bible study resources 8 and 9



Summer (delivering first week of June)

- Bible study resources 1 and 2 (begins new study)
- Honorary Life Membership honorees



Fall (delivering first week of September)

- Bible study resources 3, 4 and 5
- Thank Offering



Winter (delivering first week of December)

- Celebrate the Gifts of Women
- Fellowship of the Least Coin
- Bible study resources 6 and 7

While delivery of printed copies can vary slightly depending on the post office and regional differences, the digital issue of *Horizons* magazine will be available no later than the date in parentheses.

See page 7
for a limited time
BOGO *Horizons*
subscription offer!



As 2025 draws to a close, now is the appropriate time to consider what you need to receive and/or do by year end. Of

course, sharing your treasure and talent with PW during this last quarter of the year is important.

Whether you're receiving the Thank Offering, honoring a faithful sibling in Christ with an Honorary Life Membership, directing your IRAs required minimum distribution (RMD) with a year-end gift to Presbyterian Women or making plans for 2026, all of these are part of the living witness of PW.

Special note: To ensure that you receive resources ordered from Presbyterian Women and/or the Presbyterian Bookstore in 2025, order no later than December 15. To order, visit presbyterianwomen.org/shop or call 800/533-4371, Monday through Friday, 10 AM to 5 PM EST. (If you have trouble with orders or have a particular question, contact PW staff, 844/PW-PCUSA, option 1.)

Honorary Life Memberships received after December 11 will mail in 2026. Questions? Contact pw_pcusa@pcusa.org or call 844/PW-PCUSA, option 2.

Newly Revised Resources



Four updated resources communicate all that Presbyterian Women makes possible!

- PW Purpose brochure (packs of 10); PWR25103, free or download
- Celebration Giving brochure; PWR25031, free or download
- Together in Service brochure; PWR24431, free or download
- The Fall/Winter 2025 PW Resources catalog (download at presbyterianwomen.org/catalog)



(cont. from page 1) • Board Summary, September 2025

- 2027 PW Churchwide Gathering chair Carol Winkler presented the budget and policies. The Board adopted both. The Gathering will be at the Galt House in Louisville, Kentucky, August 5–8, 2027. The Triennial Business Meeting will be held August 4–5 and will end before the Gathering begins. Gathering registration includes three meals and all programming. Early registration will be \$450 and standard will be \$475 (deadlines to be announced in 2026). Gathering information will be provided through all national PW communication channels.
- On recommendation of the Search Committee, the Board elected Natalily Kyremes-Parks to serve as a Young Women Representative at Large, 2025–2028. According to the Bylaws, the Board seats four Young Women Representatives at Large. Two are elected at the Triennial Business Meeting. One is elected at subsequent fall meetings by the Board of Directors.
- The Creative Ministries Offering Committee (CMOC) and Horizons Editorial Advisory Committee (HEC) met September 16. CMOC voted to approve two projects for the 2026 Birthday Offering. The grants awarded total \$250,000. Both projects are in the United States. HEC voted to change the frequency of *Horizons* magazine. Beginning January 2026, four annual issues of *Horizons* magazine and one *Horizons* Bible study (five periodicals) will be published. The page count of each of the four magazine issues will be increased by eight pages. (See page 2 for a schedule.)
- On Thursday evening, Presbyterian Women of Shawnee Presbyterian Church hosted the Board for dinner at Café Ginkgo, a 2024 Birthday Offering recipient. Café Ginkgo is a program of Shawnee, one of the four historic African-American congregations of Mid-Kentucky Presbytery. The café provides meals for those facing food insecurity in the Shawnee neighborhood.

The Board will meet by Zoom in March 2026.

Autorenewing Your *Horizons* Subscription

To keep *Horizons* always on your horizon, consider adding autorenewal to your subscription. When you enroll in autorenewals, you

- Skip mailed renewal letters—good for the environment and your to-do list!
- Receive a heads-up via email the month before your subscription will renew.
- Ensure every issue of *Horizons* magazine and the annual Bible study lands in your mailbox.

If your plans change, the annual reminder email contains a link to opt out of autorenewal or change the credit card that will be charged. Autorenewal is an easy and earth-friendly way to ensure you stay connected with Presbyterian Women!

Happy Birthday, Encuentro! 30 years!

¡Feliz cumpleaños, Encuentro!
¡Que Dios siga bendiciendo a esta querida comunidad de mujeres fieles!

Who Ya Gonna Call?

Who Ya' Gonna Call?, PW's staff directory, offers a description (name and contact information) of who on your PW staff can best respond to your question.

Visit presbyterianwomen.org/staff_category/staff-contacts or download a PDF version at presbyterianwomen.org/staff.

Year End Gifts

There are so many ways to be Presbyterian Women that comparing one PW group to another is like comparing apples to ducks. Read and share a flier (page 8) and/or brief devotion (presbyterianwomen.org/applesandducks) around this truth and consider a year-end gift to Presbyterian Women. Whether you're a Honeycrisp or a Mallard, thank you for being part of PW!



Suggest a Gathering Plenary Speaker and/or Workshop Leader

The 2027 Churchwide Gathering will be held August 5–8, 2027 in Louisville, Kentucky. The Gathering is themed “A cord of three strands is not readily broken,” based on Ecclesiastes 4:12.

As always, the Gathering will inspire, connect and equip Presbyterian Women. Gathering planners are now seeking individuals to speak in plenary, lead worship and present workshops. Your suggestions for engaging speakers and leaders can help shape an incredible Gathering that embodies the depth and breadth of Presbyterian Women.

Send your suggestions by [filling out a form online](#) or [downloading a speaker/leader suggestion form](#), which is returnable by email or mail. The deadline for suggestions is **January 24, 2026**.

Two frequently asked questions and their answers:

1. You do not need to check with the individual before you submit their name.
2. You may suggest yourself!



We'll see you there!
Pam Snyder, 2024–2027 PW Moderator
Kelsey Law, 2024–2027 PW Vice Moderator

LOUISVILLE, KENTUCKY

2027 Churchwide Gathering of Presbyterian Women

The 2027 Churchwide Gathering will be an exciting faith-filled time for Presbyterian women to gather for worship, education, community building, fun and renewal.

August 5–8, 2027
Save the date and stay tuned!
presbyterianwomen.org/gathering

Introducing the 2026–2027 PW/*Horizons* Bible Study

United Through Christ, Bound to Each Other

Paul's First Letter to the Corinthians

By Rhonda Mawhood Lee
Suggestions for Leaders by Sarah Leer

Join Presbyterian Women and learn about Paul's first letter to the church in Corinth. This Bible study explores the letter's setting, divisions within the congregation, and ultimately, the gifts given to all through the work of Christ. Readers will be fascinated by this journey to Corinth and will explore how Paul's timeless message of loving unity calls Christ's followers today.



Although First Corinthians contains familiar theology and passages we easily recognize—like the words of institution for the Lord's Supper and the meditation on love—readers often don't realize that Paul wrote this letter to a church in conflict.

Paul founded the congregation in Corinth around the year 50 and later moved to Ephesus, a few hundred miles away. From there Paul wrote a letter to the Corinthians trying to help settle their disputes. He saw that the church was lacking in love, and their conflicts were betraying God's saving act in the resurrection of Jesus Christ.

The church in Corinth was diverse, and it was easy for factions to form. In his letter, Paul called his siblings in faith to a loving unity rooted in the reality that Jesus Christ had been crucified and resurrected for *everyone*. Christians throughout the ages have recognized the Holy Spirit's influence on Paul's words of unity and love, especially during times of conflict.

Paul wrote at a time when Christians expected Jesus' imminent return, and he challenged all to be ready when that day came. Today the church is still waiting, still affirming that Jesus will return, and still proclaiming that this world has already been transformed by God's life-giving love. This Bible study challenges us to trust in Christ's saving love and to demonstrate that love by the way we live.

[Adapted from the Introduction to *United Through Christ, Bound to Each Other*]

Learn more about this
Bible study by visiting
presbyterianwomen.org/bible-study/united



About the Authors



The Rev. Dr. Rhonda Mawhood Lee is an Episcopal priest, writer, and spiritual director. Originally from Montréal, Québec, Canada, she was raised with two native languages, French and English, and continues to enjoy studying languages and getting to know people from a wide variety of cultural backgrounds. She earned an MDiv from Louisville Presbyterian

Theological Seminary and a PhD in history from Duke University. Rhonda has written for *Horizons* magazine and authored *Seek and You Will Find: Discovering a Practice of Prayer* (Forward Movement, 2021), and *Suicide and the Communion of Saints* (Eerdmans, 2025).



Dr. Sarah Leer is a native Arkansan and lifelong Presbyterian. She has a consulting business, serves as the transitional youth and young adult developer for the Presbytery of Arkansas, and is the project manager for Growing in Grace, a Wesleyan institute focused on anti-ableist worship practices. Sarah is a graduate of Wake Forest University, Columbia

Theological Seminary, and the Clinton School of Public Service. She is a practical theologian who is living into her call to disrupt the status quo in order to seek liberation, justice, and belonging in solidarity with those living on the margins.



Lesson One
Unity in Christ, Wisdom from God



Lesson Two
Connected in Christ



Lesson Three
Freedom in Christ



Lesson Four
Living Freely and the Responsibility to Care



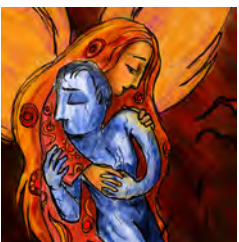
Lesson Five
For the Good of the Community



Lesson Six
"Now You Are the Body of Christ"



Lesson Seven
Christian Love



Lesson Eight
Hope in the Resurrection



Lesson Nine
Connected by God's Love

Bible study editions, supplemental resources, and other helps* (Beginning spring 2026)

Bible study editions

- **English edition**; item HZN26100; \$14
- **Spanish edition**; item HZN26110; \$14
- **Spanish download edition**; item HZN26111; \$14; purchase and download at presbyterianwomen.org/shop
- **Large-print edition** (spiral bound, full-color interior); item HZN26150; \$20
- **Ecumenical edition**; item HZN26102; \$14
- **Audio edition**; download only; item HZN26172; \$15; purchase and download at presbyterianwomen.org/shop

Supplemental materials

- **Workshop for Leaders**; item HZN26101; available as a free download
- **United Through Christ Companion DVD**; Rhonda Mawhood Lee's video introduction for each lesson of the study, about 10 minutes per lesson; item HZN26103; \$20
- **United Through Christ Companion DVD download**; item HZN26104; \$20; purchase and download at presbyterianwomen.org/shop
- **Pendant/charm**; features art from lesson seven, "Embrace in Unity"; item HZN26300; \$10
- **Promotional flie**; item HZN26411; available as a free download
- **Promotional poster**; item HZN26410; free; also available as a free download; item HZN26409
- **Bulletin cover**—8 1/2" x 11"; item HZN26105; available as a free download
- Subscribe to *Horizons* and read the **Anna H. Bedford Bible Study Resource**, available exclusively in the magazine, beginning with the Summer 2026 issue.

Ordering is easy! Shop online at presbyterianwomen.org/shop or call 800/533-4371, Monday through Friday, 10 am to 5 pm est.

* Note that prices do not include shipping and handling (\$6.25 minimum). International orders and orders to Puerto Rico incur additional shipping charges. Prices, availability, and shipping charges are subject to change without notice.

Horizons isn't just a Bible study, Horizons is a magazine!

In fact, current *Horizons* magazine subscribers receive the 2026–2027 PW/*Horizons* Bible study (and Bible study helps beginning with the Summer 2026 issue). Subscribe by June 1, 2026, and you will, too!

Call toll-free 866/802-3635
or visit presbyterianwomen.org/horizons.



Give Two GIFT subscriptions for the price of ONE!

With this special offer (and for a very limited time only), you can now give one gift subscription to **Horizons** and get one FREE! For just \$19.95, you can give two gifts for the price of one! With each one-year subscription, your gift recipients will receive four issues of the magazine (in print and digital) plus the award-winning PW/*Horizons* Bible study (mailed in March 2026). Your gift recipients will receive the 2026–2027 PW/*Horizons* Bible study, **United Through Christ, Bound to Each Other: Paul's First Letter to the Corinthians** by Rev. Dr. Rhonda Mawhood Lee with Suggestions for Leaders by Sarah Leer. Anyone who subscribes by June 1, 2026 will receive this study as part of their subscription. So hurry!



☐ **YES!** Send my **Horizons** gift subscription (one year/four issues plus the Bible study, and free electronic access to the magazine) to the people listed below. I understand that when **I buy one gift for \$19.95, I'll get the second one FREE.**

Billing information

Name _____
Address 1 _____
Address 2 _____
City _____ State _____ Zip _____
Phone _____
Email _____

Two easy payment options (check one)

☐ My check payable to *Horizons* is enclosed.
☐ Please charge my
☐ VISA ☐ MasterCard ☐ Discover ☐ Amex
Account number _____
Exp date _____ Three-digit security code _____
Signature _____

Gift one: \$19.95

Name _____
Address 1 _____
Address 2 _____
City _____ State _____ Zip _____

Gift two: FREE

Name _____
Address 1 _____
Address 2 _____
City _____ State _____ Zip _____

For additional gifts, please attach your own sheet and mail to the address below.

This offer ends June 1, 2026.

Mail today! *Horizons*, PO Box 42, Congers, NY 10920-0421

Order online! presbyterianwomen.org/I25BOGONWS

Call now! 866/802-3635, mention **I25BOGONWS** to receive this special offer.

Presbyterian Women in the
Presbyterian Church (U.S.A.), Inc.
100 Witherspoon Street
Louisville, KY 40202-1396
844/PW-PCUSA (844/797-2872)
presbyterianwomen.org



"To each is given the manifestation of the Spirit for the common good."

—1 Corinthians 12:8 (TLB)

At the conclusion of the fall 2025 PW, Inc. Board meeting, Pam Snyder and Kelsey Law, PW's national moderator and vice moderator, respectively, shared a whimsical truism—"You can't compare apples to ducks!" With imagination and consideration this lively image reflects the reality of Presbyterian Women: there is no definitive way to be Presbyterian Women—apple or duck—because both are equally important in the expression of the PW Purpose in the world.

An apple is never just an apple. Every apple holds seeds—potential for future trees. If those trees grow together, they form an orchard. An orchard becomes a system of mutual shelter and support, where trees can better withstand wind, enrich and retain soil, and create a harvest far greater than one tree could manage alone. Presbyterian Women is like that orchard. Each faithful act—each apple—carries seeds of justice, compassion and leadership. When planted and nurtured, those seeds grow into future leaders, new ministries, and generations of women who will also sow seeds. The growth we tend, the bounty we enjoy is never just our own—it is the abundance of an orchard planted by those who came before us and tended by the Spirit among us.

And then, there are ducks. When we watch ducks fly overhead in a V-formation, it's striking—but it's also practical. Scientists tell us that each duck, by flapping its wings, creates lift for the one behind it. Flying in formation allows the whole flock to travel farther and faster than any one bird could alone.

The Presbyterian Women organization is both orchard and flock—rooted and rising, bearing fruit and taking flight. Together, we offer nourishment, shelter and strength. Together, we create lift for one another.

As 2025 draws to a close, we give thanks for the orchard that sustains us, for the flock that carries us, and for the ongoing harvest and flight of PW's Purpose in action. Let us support Presbyterian Women—with prayer, with support, with faithful community!



Now more than ever, Presbyterian Women depends on collecting the Annual Mission Fund in both traditional ways (e.g., passing a basket during in-person PW group meetings) and flexible ways (online with a credit card or by mail with a check). Please consider an end-of-year gift for Presbyterian Women online or by mail. A healthy Annual Mission Fund enables PW to support healthy orchards and flocks of ducks!

- Give online at presbyterianwomen.org/give. Then select **Year End 2025** and your gift amount. Select a gift of \$10 or more (and add a bit extra for a transaction fee). Please scroll and type **PWYE25** in the comments box as well as your church and presbytery (or synod) information. This giving opportunity is open for individuals and groups!
- Use the form below and mail your gift to Presbyterian Women, Inc., PO Box 643652, Pittsburgh, PA 15264-3652. Please indicate **PWYE25** in the memo line of your check (or with a separate note).
- Share your PW story or photos—or both! Contact Carissa Herold by phone (844/PWPCUSA, ext. 5322) or email carissa.herold@pcusa.org.
- Stay in touch, stay in community. If you're not already on PW's email list, email pw_pcusa@pcusa.org. And stay in the loop by sharing PW news, reading *Horizons* magazine, and more.

✂.....

Yes, I support Presbyterian Women because PW matters to the church, the world and to me!

☐ My check made payable to "Presbyterian Women" is enclosed for this amount: ☐ \$25 ☐ \$35 ☐ \$50 ☐ Other _____

☐ I choose to pay with a credit card: ☐ VISA ☐ MasterCard ☐ American Express ☐ Discover

I would like to give this gift ☐ Monthly ☐ Quarterly ☐ Annually ☐ One-time

Name on card _____ Amount to be charged _____ Date _____

Card number _____ Expiration date _____ CVC code* _____

Address _____

City _____ State _____ Zip code _____

Signature _____

*Card verification code—three- or four-digit number on the back of your card

You may also give by credit card at
presbyterianwomen.org/give.



Apples and Ducks

The Devotion

BY KELSEY LAW

In this first year of the triennium, Pam Snyder (PW Churchwide moderator) and I (PW Churchwide vice moderator) have shared space where we often hear the phrase, “You can’t compare apples to ducks.” And it’s true—apples and ducks couldn’t be more different. One grows, offering nourishment. The other takes flight, offering lift to its flock. Yet both remind us of what it means to live faithfully in community.

An apple is never just an apple. Every apple holds seeds—potential for future trees. And when those trees grow together, they form an orchard. An orchard becomes a system of mutual shelter and support where trees can better withstand wind, enrich and retain soil, and create a harvest far greater than one tree could manage alone. Presbyterian Women is like that orchard. Each faithful act—each apple—carries seeds of justice, compassion and leadership. When planted and nurtured, those seeds grow into future leaders, new ministries, and generations of women who will also sow seeds. The growth we tend, the bounty we enjoy is never just our own—it is the abundance of an orchard planted by those who came before us and tended by the Spirit among us.

And then, there are the ducks. When we watch ducks fly overhead in a V-formation, it’s striking—but it’s also practical. Scientists tell us that each duck, by flapping its wings, creates lift for the one behind it. Flying together in formation allows the whole flock to travel farther and faster than any one bird could alone. When one duck tires, it drops back, and another flies forward to take the lead. When one falls out of the formation because of injury or fatigue, two others leave the V to stay with it, protecting it until it can rejoin or until it finds rest. Our purpose calls us to nurture faith, support one another, and work for justice and peace. Like those ducks, our strength comes from the

formation—the community—that God has shaped among us.

Each of us takes turns leading, following and supporting. Each of us benefits from the faith and gifts of those beside us. In difficult times, may we remember that we are not flying alone. Our shared work matters, our shared purpose gives direction and our shared commitment carries us farther than we could ever go by ourselves.

So it is with Presbyterian Women. We are both orchard and flock—rooted and rising, bearing fruit and taking flight. Together we offer nourishment, shelter and strength. Together we create lift for one another. Today, we give thanks: for the orchard that sustains us, for the flock that carries us and for the ongoing harvest and flight of Presbyterian Women’s purpose. Apples and ducks are a mismatch—because they serve entirely different purposes.

In Presbyterian Women, our call is to ask the right questions:

- Are we faithful to our purpose?
- Are we doing what God has called us to do?
- Are we using our gifts together for the flourishing of the whole community?

When we ask the right questions, we start focusing on the shared flight, the shared warmth and the shared mission God has given us to our shared Purpose. PW is stronger, more faithful and more creative because of the many gifts in PW.

Like the apple that bears fruit season after season, your work—your prayers, your discernment, your leadership—has planted seeds that will grow far beyond this place and time. May we leave here rooted in our shared purpose, bearing fruit for the orchard, creating lift for the flock and trusting God to carry the work forward.

How does your group embody the apples and ducks aspect of Presbyterian Women?

Do you have other ways of communicating the complex yet united ministry that is PW?

